

Fact Sheet

2026 – First Quarter



Mount Logan Capital operates an integrated model combining private credit asset management (Mount Logan Management) and a scalable insurance solutions platform (Ability Insurance Company). The synergistic model is designed to generate durable, recurring earnings and long-term shareholder value.

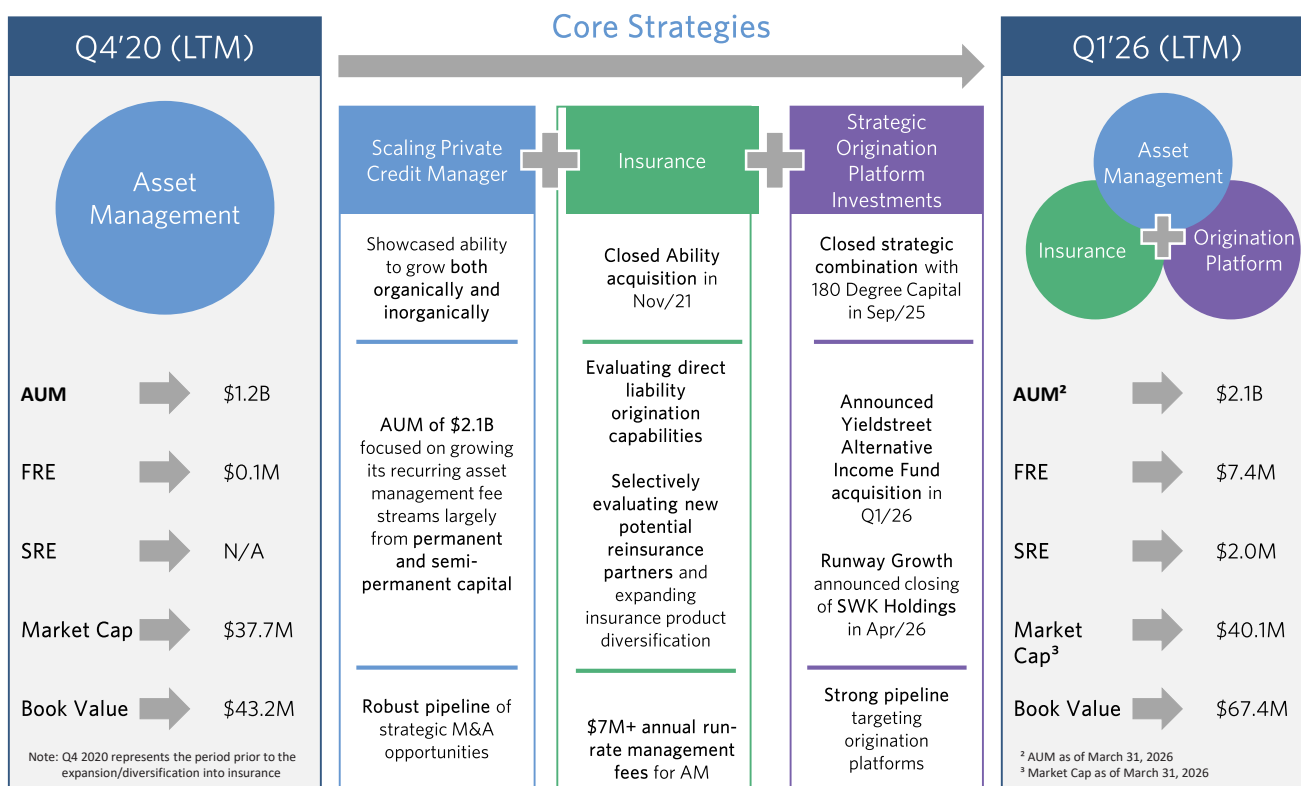
Quick Facts (as of 3/31/2026)

| | |
|-----------------------|----------------|
| Symbol | NASDAQ:MLCI |
| Market Capitalization | \$40.1 million |
| Total Shares | 11,188,768 |
| Stock Price | \$3.58 |

Why Invest in Mount Logan

- ➔ Synergistic asset management and insurance business model
- ➔ Strong leadership with management experience in asset management and insurance solutions businesses
- ➔ Compelling combination of growth supported by stable, long-term capital base
- ➔ Resilient business across dynamic interest rate environments
- ➔ Disciplined M&A strategy accelerates growth and value creation
- ➔ Attractive valuation relative to growth opportunity

Multi-Year Strategy on Expanding Asset Management & Insurance Platforms



Yieldstreet Alternative Income Fund Acquisition

Inorganic Growth - Mount Logan-Managed SOFIX to Acquire \$100m+ in Assets

In March 2026, Mount Logan-managed Opportunistic Credit Interval Fund (SOFIX) entered into a definitive agreement to acquire assets from Yieldstreet Alternative Income Fund (YS AIF) for newly issued shares of SOFIX.

\$100 Million+
Increase in AUM

At least \$2.8 Million, or At least 30% of 2025 FRE
Estimated Contribution to Annual FRE¹

1. Following closing, which is subject to regulatory and YS AIF shareholder approvals. 2. Estimated fee related earnings ("FRE") contribution from acquired assets based on current management and incentive fee structure of SOFIX with \$100 million in additional assets. Actual contribution of the incentive fee portion of this amount is dependent on performance and actual results may differ materially from these projections. See "Estimates and Assumptions" for additional information.

Cautionary Statement Regarding Forward-Looking Statements

This fact sheet, and oral statements made from time to time by representatives of Mount Logan Capital Inc. ("Mount Logan" and "MLCI") or Opportunistic Credit Interval Fund ("SOFIX") may contain statements of a forward-looking nature relating to future events within the meaning of applicable U.S. and Canadian securities laws. Forward-looking statements may be identified by words such as "anticipates," "believes," "could," "continue," "estimate," "expects," "intends," "will," "should," "may," "plan," "predict," "project," "would," "forecasts," "seeks," "future," "proposes," "target," "goal," "objective," "outlook" and variations of these words or similar expressions (or the negative versions of such words or expressions). Forward-looking statements are not statements of historical fact and reflect Mount Logan's or SOFIX's current views about future events. Such forward-looking statements include, without limitation, statements about the anticipated growth, profitability and scalability of the Company's business; the Company's strategic objectives, model, approach and future activities; planned capital raising and liquidity activities and the expected outcome of such activities; the expected timing and benefits of the transaction with Yieldstreet Alternative Income Fund ("YS AIF"), the expected increase in FRE and accretive nature of the transaction with YS AIF, future financial and operating results, Mount Logan's or SOFIX's plans, objectives, expectations and intentions regarding our business strategy and plans, and other statements that are not historical facts, including but not limited to projected cash flow and liquidity, business strategy, shareholder liquidity and the payment of dividends to shareholders of Mount Logan or SOFIX, and other plans and objectives for future operations.

These forward-looking statements involve a number of risks, uncertainties (some of which are beyond the Company's control) or other assumptions that may cause actual results or performance to be materially different from those expressed or implied by these forward-looking statements. These risks and uncertainties include, but are not limited to the inability to complete and recognize the anticipated benefits of the transaction with YS AIF on the anticipated timeline or at all; purchase price adjustments, unexpected costs related to the transaction with YS AIF; the risk of litigation related to the Business Combination; variability in revenues, earnings, and cash flows and the resulting impact on quarterly earnings trends and stock price volatility; the intensity of competition in asset management and insurance markets and constraints on the ability to execute growth strategies and maintain or increase market share or margins; reliance on technology and information systems, including third party and systems provided by BC Partners Advisors L.P. ("BCPA"), and risks related to cybersecurity, data integrity, and operational resilience; dependence on management's assumptions, estimates, models, and judgment, and the risk that actual outcomes diverge materially from those assumptions; illiquidity of certain assets under management and insurance investments, and the impact of limited liquidity on valuation, portfolio management, and capital allocation; dependence on access to financing markets and the availability, cost, and terms of capital and liquidity; risks associated with the use of hedging and other risk management instruments, including costs, basis risk, counterparty exposure, and potential ineffectiveness; adverse political, market, and economic conditions and their effects on investment performance, funding costs, client activity, and policyholder behavior; dependence on BCPA and key BCPA personnel; actual and potential conflicts of interest arising from the relationship with BCPA; concentration risk associated with managing a limited number of funds and investments; complexities and subjectivity in valuing illiquid assets, including model risk and sensitivity to assumptions; the heavily regulated nature of the insurance business; and the increased expenses and compliance requirements associated with being a U.S. public company. No assurances can be given that the forward-looking statements contained in this fact sheet will occur as projected, and actual results may differ materially from those projected. Forward-looking statements are based on current expectations, estimates and assumptions that involve a number of risks and uncertainties, both known and unknown, that could cause actual results to differ materially from those projected. Forward-looking statements are based on the estimates and opinions of management at the time the statements are made. Readers should carefully review the statements set forth in the reports, which Mount Logan and SOFIX have filed or will file from time to time with the U.S. Securities and Exchange Commission ("SEC") or on SEDAR+ and any risk factors contained in such reports, including the section titled "Risk Factors" in Mount Logan's Annual Report on Form 10-K for the year ended December 31, 2025, filed with the SEC on March 18, 2026. Should one or more of these risks or uncertainties materialize, or should any of the assumptions prove incorrect, actual results may vary in material respects from those projected in these forward-looking statements.

Each of Mount Logan and SOFIX do not undertake any obligation, and expressly disclaims any obligation, to publicly update any forward-looking statement, whether as a result of new information, future events or otherwise, except as required by law. Any discussion of past performance is not an indication of future results. Investing in financial markets involves a substantial degree of risk. Investors must be able to withstand a total loss of their investment. The information herein is believed to be reliable and has been obtained from sources believed to be reliable, but no representation or warranty is made, expressed or implied, with respect to the fairness, correctness, accuracy, reasonableness or completeness of the information and opinions. The information contained on the website of Mount Logan or SOFIX is not incorporated by reference into this fact sheet. Neither Mount Logan nor SOFIX is responsible for the contents of third-party websites.

Estimates and Assumptions

This fact sheet includes unaudited financial and business projections. These projections, and their underlying assumptions, are inherently unpredictable and undue reliance should not be placed thereon. These estimates reflect internal financial models that Mount Logan uses in connection with its strategic planning and are based on numerous variables and assumptions made by Mount Logan's management with respect to industry performance, general business, economic, regulatory and financial conditions and other future events, as well as matters specific to Mount Logan's businesses, all of which are difficult or impossible to predict accurately and many of which are beyond the control of Mount Logan's management. As a result, these estimates constitute forward-looking statements and are subject to many risks and uncertainties that could cause actual results to differ materially from these projections. Please carefully consider "Cautionary Statement Regarding Forward-Looking Statements" above. There can be no assurance that these estimates will be realized or that actual results will not be significantly different than projected. The inclusion of these estimates in this fact sheet should not be regarded as an indication that Mount Logan or any of its affiliates, advisors, officers, directors or representatives considered or considers such estimates to be necessarily predictive of actual future events, and these estimates should not be relied upon as such. The inclusion of these estimates herein should not be deemed an admission or representation by Mount Logan that its management views these estimates as material information. Certain of the estimates and projections set forth herein may be considered non-GAAP financial measures, including FRE. There are limitations inherent in non-GAAP financial measures, because they exclude charges and credits that are required to be included by generally accepted accounting principles in the United States ("GAAP"). Non-GAAP measures should not be considered in isolation from, or as a substitute for, financial information presented in compliance with GAAP, and non-GAAP financial measures used by Mount Logan may not be comparable with similarly titled amounts used by other companies. No reconciliation of these non-GAAP measures was created or used in connection with preparing the estimates included herein.

No Offer or Solicitation

This fact sheet is not, and under no circumstances is it to be construed as, a prospectus or an advertisement and the communication of this release is not, and under no circumstances is it intended to be and does not constitute an offer to sell or the solicitation of an offer to purchase any securities in MLCI, SOFIX, Yieldstreet Alternative Income Fund ("YS AIF") or in any fund or other investment vehicle in any jurisdiction pursuant to the proposed transactions or otherwise.

Additional Information and Where to Find It

Additional information regarding the Asset Acquisition transaction will be presented in a proxy statement/prospectus that will be provided to YS AIF shareholders at a meeting of YS AIF shareholders. The proxy statement/prospectus has yet to be filed with the SEC. When available and effective, as applicable, YS AIF shareholders are encouraged to review the proxy statement/prospectus on the SEC website at www.sec.gov.

INVESTORS AND SECURITY HOLDERS ARE URGED TO READ THE PROXY STATEMENT/PROSPECTUS AND OTHER RELEVANT DOCUMENTS FILED WITH THE SEC CAREFULLY AND IN THEIR ENTIRETY WHEN THEY BECOME AVAILABLE BECAUSE THEY WILL CONTAIN IMPORTANT INFORMATION ABOUT THE TRANSACTION.

Participants in the Solicitation

SOFIX, MLCI, and their respective directors and officers may be deemed to be participants in the solicitation of proxies from the shareholders of YS AIF in connection with the proposed asset acquisition. Information regarding the persons who may be deemed participants in such solicitation will be set forth in the proxy statement/prospectus relating to the proposed asset acquisition when it is filed with the SEC. Shareholders may obtain additional information regarding the interests of the participants in the solicitation of proxies in connection with the proposed asset acquisition by reading the proxy statement/prospectus when it becomes available.